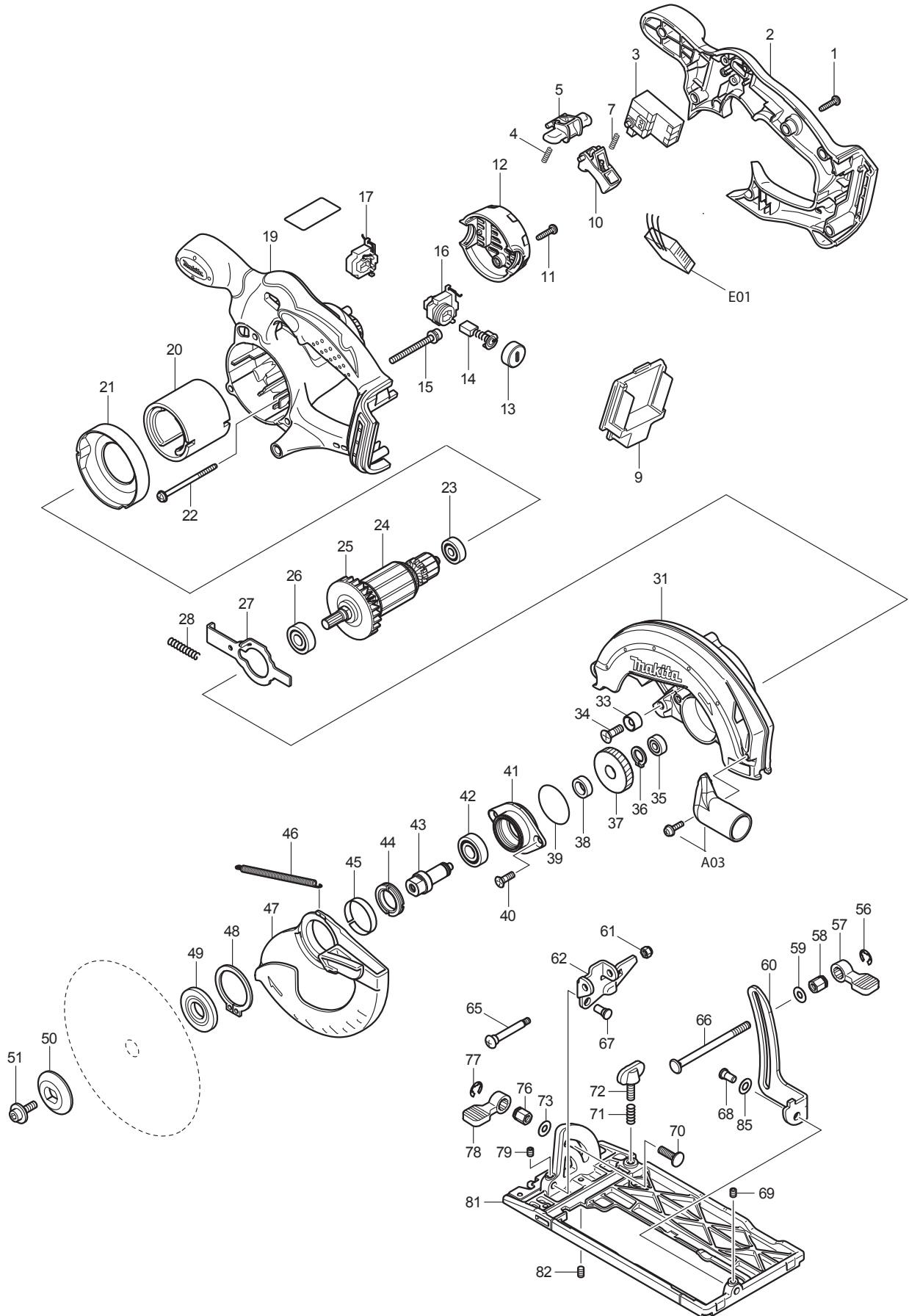




12 - 2015
BSS611 / BSS611X / BSS611Z / BSS611F
18V 6-1/2" CIRCULAR SAW



Item No	Type	Ref	Part No	Description	Qty	Unit
1			265995-6	TAPPING SCREW 4X18	5	PC.
2	1		450227-6	* HANDLE COVER	1	PC.
	2		141472-1	* HANDLE COVER	1	PC.
3			651976-0	SWITCH TG73BD	1	PC.
4			231469-9	COMPRESSION SPRING 4	1	PC.
5			419664-3	LOCK OFF LEVER	1	PC.
7			231469-9	COMPRESSION SPRING 4	1	PC.
9	1		643812-4	* TERMINAL, BLACK	1	PC.
	2		643838-6	* TERMINAL	1	PC.
	3		643859-8	* TERMINAL	1	PC.
	4		644808-8	* INSULATOR COMPLETE	1	PC.
10			419665-1	SWITCH LEVER	1	PC.
11			265995-6	TAPPING SCREW 4X18	2	PC.
12			419281-9	REAR COVER	1	PC.
13			643829-7	BRUSH HOLDER CAP	2	PC.
14	1		194435-6	CARBON BRUSH CB-441 2PC/SET (W/O ORIGIN) - N/L/A	1	SET
	2		195022-4	CARBON BRUSH CB-441, 2PCS/SET, W/ORIGIN	1	SET
15			911263-2	PAN HEAD SCREW M5X40	3	PC.
16	1		643825-5	* BRUSH HOLDER	1	PC.
	2		643897-0	* BRUSH HOLDER	1	PC.
17	1		643824-7	* BRUSH HOLDER	1	PC.
	2		643898-8	* BRUSH HOLDER	1	PC.
19	1		158604-3	* MOTOR HOUSING COM	1	PC.
	2		141528-0	* MOTOR HOUSING COM	1	PC.
19	2	INC.	810368-4	* CAUTION LABEL	1	PC.
20	2		632H52-7	YOKE UNIT	1	PC.
21			419285-1	BAFFLE PLATE	1	PC.
22			266292-3	TAPPING SCREW 4X65	2	PC.
23			210045-2	BALL BEARING 627DDW	1	PC.
24			510095-0	ARMATURE ASSY (INCLUDES ITEMS 23, 25 & 26)	1	PC.
25			241869-5	FAN 55	1	PC.
26			211061-7	BALL BEARING 6000LLB	1	PC.
27	1		345659-9	SHAFT LOCK 102MM	1	PC.
	2		346059-6	SHAFT LOCK 104MM	1	PC.
28			233092-6	COMPRESSION SPRING 5	1	PC.
31			158617-4	BLADE CASE COM. (TYPE1 W/LABEL, TYPE2 W/O LABEL)	1	PC.
		INC.	213434-0	O-RING 26	1	PC.
		INC.	816847-0	OPERATIONAL INDICATION LABEL (TYPE1 ONLY)	1	PC.
31		INC.	810202-8	CAUTION LABEL	1	PC.
33			262049-0	RUBBER RING 6	1	PC.
34			251368-9	+ COUNTERSUNK SCREW M6	1	PC.
35			210028-2	BALL BEARING 606ZZ	1	PC.
36			961052-5	RETAINING RING S-12	1	PC.
37			227156-6	SPUR GEAR 52	1	PC.
38			257173-2	RING 12	1	PC.
39			213512-6	O RING 39	1	PC.
40			265034-2	+ COUNTERSUNK HEAD SCREW M5X16	2	PC.
41			318009-1	BEARING BOX	1	PC.
42	1		210109-2	BALL BEARING 6001DDW	1	PC.
	2		210163-6	BALL BEARING 6001DDW	1	PC.
43			324626-7	SPINDLE	1	PC.
44			285845-9	BEARING RETAINER 19-29	1	PC.
45			345469-4	THICKNESS RING	1	PC.
46			231821-1	TENSION SPRING 3	1	PC.
47			419280-1	SAFETY COVER	1	PC.
48			961152-1	RETAINING RING (EXT) S-34	1	PC.
49			224411-7	INNER FLANGE 35	1	PC.
50			224409-4	OUTER FLANGE 35	1	PC.
51			266133-3	HEX. SOCKET HEAD BOLT M6X20	1	PC.
56			961014-3	STOP RING E-8	1	PC.
57			272229-0	LEVER 40	1	PC.
58			252158-3	HEX.NUT M6	1	PC.

Item No	Type	Ref	Part No	Description	Qty	Unit
59			941151-9	FLAT WASHER 6	1	PC.
60			345658-1	DEPTH GUIDE	1	PC.
61			252103-8	HEX. LOCK NUT M5-8	1	PC.
62			345657-3	ANGULAR GUIDE	1	PC.
65			265056-2	+ PAN HEAD SCREW M5	1	PC.
66			266194-3	FLAT HEAD SCREW M6X90	1	PC.
67			256480-0	SHOULDER PIN 6-7	1	PC.
68			256480-0	SHOULDER PIN 6-7	1	PC.
69			266264-8	HEX. SOCKET HEAD SCREW M5X6	1	PC.
70			251919-8	CAP SQUARE NECK BOLT M6X20	1	PC.
71			231007-7	COMPRESSION SPRING 6	1	PC.
72			251896-4	SCREW M5X20	1	PC.
73			941151-9	FLAT WASHER 6	1	PC.
76			252133-9	HEX. NUT M6	1	PC.
77			961014-3	STOP RING E-8	1	PC.
78			272251-7	LEVER 30	1	PC.
79			266264-8	HEX. SOCKET HEAD SCREW M5X6	1	PC.
81			154831-0	BASE COMPLETE	1	PC.
82			266229-0	HEX. SOCKET SET SCREW M5X8	1	PC.
85			253186-1	FLAT WASHER 7	1	PC.
D01			654509-0	CONNECTOR 2-SD	2	PC.
E01			620259-9	CONTROLLER	1	PC.

ACCESSORIES

- See catalogue or visit www.makita.ca for more accessories information -

A01			164095-8	GUIDE RULE	1	PC.
A02			783203-8	HEX. WRENCH 5	1	PC.
A03			P-80012	DUST NOZZLE	1	PC.
A04			A-85092	6-1/2" C.T.SAW BLADE 24T	1	PC.
			T-01395	6-1/2" C.T.SAW BLADE 16T	1	PC.
			T-01404	6-1/2" C.T.SAW BLADE 24T	1	PC.
			T-01410	6-1/2" C.T.SAW BLADE 40T	1	PC.
			T-01426	6-1/2" C.T.SAW BLADE 16T/24T 2PC/SET	1	SET
A05	1		DC18RA	CHARGER DC18RA	1	PC.
	2		DC18RC	CHARGER DC18RC	1	PC.
			DC18SD	CHARGER DC18SD	1	PC.
			DC18SE	AUTOMOTIVE CHARGER DC18SE	1	PC.
			DC18RAKIT	CHARGER + BATTERY (DC18RA+BL1830)	1	SET
			DC24SC	CHARGER F/ 7.2-24V, 1.3-3.3AH BATTERY	1	PC.
A06			194205-3	18V LI-ION BATTERY BL1830	1	PC.
			194230-4	18V LI-ION BATTERY BL1830(3.0AH), 2/PK	1	SET
			194288-3	18V LI-ION BATTERY BL1830 (3.0AH), 10/PK	1	SET
A07	1		824757-7	PLASTIC CARRYING CASE	1	PC.
		INC.	163455-1	LATCH	2	PC.
		INC.	419360-3	HANDLE	1	PC.
	2		141353-9	PLASTIC CARRYING CASE COMPLETE	1	PC.
		INC.	163455-1	LATCH	2	PC.
		INC.	419360-3	HANDLE	1	PC.
	Opt		821010-X	TOOL BAG 14"	1	PC.
A08			194649-7	BATTERY PROTECTOR (F/BL1430, BL1830)	1	PC.
A09			450128-8	BATTERY COVER (F/LI-ION)	1	PC.

SERVICE CHANGES

1. Changes on Switch, Terminal and Housing Set (Battery Protection Circuit)

Item No.	Description	(T/I#84907)		(T/I# 93260)	(T/I# A0105)
		Type 1	Type 2	Type 3	Type 4
17	Brush Holder	643824-7		643898-8	
16	Brush Holder	643825-5		643897-0	
9	Terminal >Isulator Complete	643812-4	643838-6	643859-8	644808-8
2	Handle Cover	450227-6		141472-1	
19	Motor Housing Complete	158604-3		141528-0	
E01	Controller	---	---	620259-9	

Above parts are completely interchangeable as a set.

(T/I# A0830)

Service Note:

- Use **TYPE 3** for repair of the models manufactured on or after December 2011 with using **Yellow lead wire between Controller and Terminal.**
- Use **TYPE 2** (or **TYPE 1**) for repair of the models manufactured before December 2011 without using Yellow lead wire between Controller and Terminal.

**** See Technical Information #93260 for Wiring Diagram Change**